

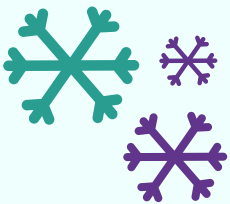


NATIONAL INFLUENZA VACCINATION WEEK – DECEMBER 5-9, 2022

National Influenza Vaccination Week is a great time to remind everyone 6 months and older that a flu vaccine is the best way to protect against flu and there is still time to be vaccinated.

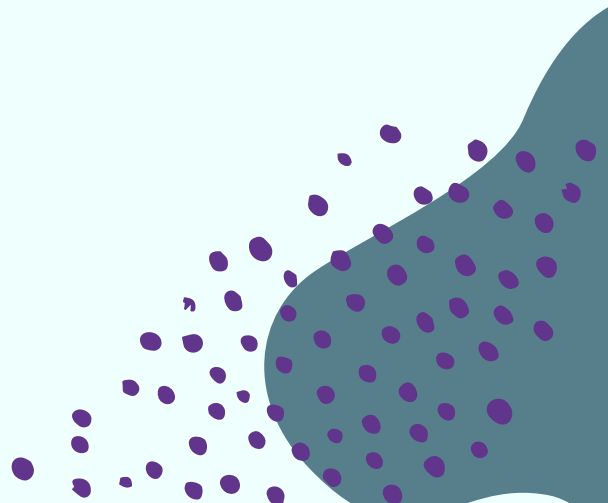
According to the CDC:

- Seasonal influenza activity is elevated across the country.
- The majority of influenza viruses detected this season have been influenza A(H3N2) viruses, but the proportion of subtyped influenza A viruses that are A(H1N1) is increasing slightly.
- Pediatric influenza-associated deaths have been reported this season.
- As of mid-November, there have been at least 4.4 million illnesses, 38,000 hospitalizations, and 2,100 deaths from flu this season.
- The cumulative hospitalization rate in the FluSurv-NET system is higher than the rate observed in week 45 during every previous season since 2010-2011.
- The majority of influenza viruses tested are in the same genetic subclade as and antigenically similar to the influenza viruses included in this season's influenza vaccine.




Illinois Chapter

American Academy of Pediatrics
DEDICATED TO THE HEALTH OF ALL CHILDREN®






2022/2023 INFLUENZA VACCINATION GUIDANCE



Vaccinate those 6
months+ without a
contraindication

2 doses for children under 8
who have not received ≥ 2
total doses of tri- or
quadrivalent flu vaccine ≥ 4
weeks apart before 7/1/22



2 doses for children
under 8 whose
influenza vaccination
history is unknown

Multiple product
options available
depending on age

Pregnant people can
and should receive a
flu vaccine

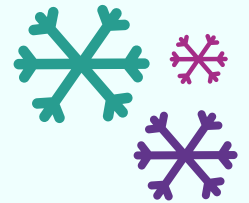
Flu vaccines can be
coadministered
with COVID-19 and
other vaccines



REMINDER RECALLS IN I-CARE

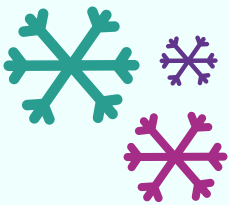
Identify patients overdue for their flu vaccine by:

Deciding on an age range to focus on.



Then, run a query for those patients who are over 30 days overdue for vaccination.

Next, run the same query in your EHR.



Pull the records for everyone who came up on the lists.

Consider using using postcards, letters, patient portals, text messages, or phone calls to contact identified patients.

Illinois Chapter

American Academy of Pediatrics
DEDICATED TO THE HEALTH OF ALL CHILDREN®



RESOURCES

CLINICAL GUIDANCE

[ICAAP 2022-2023 Flu Vaccine Toolkit](#)

[CDC Summary of Recommendations](#)

[AAP Recommendations for Prevention and Control of Influenza in Children, 2022-2023](#)

[CDC Flu Surveillance](#)

[IDPH Flu Surveillance](#)

[Chicago Flu Surveillance](#)

OUTREACH MATERIALS

[ICAAP 2022-2023 Flu Vaccine Toolkit](#)

[CDC National Influenza Vaccination Week Toolkit](#)

[Frequently Asked Influenza \(Flu\) Questions: 2022-2023 Season](#)

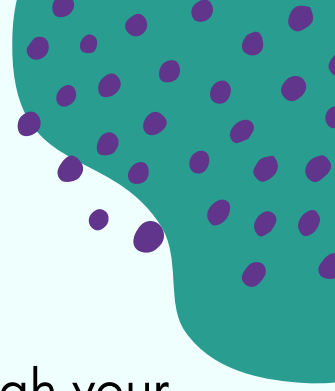
[Healthy Children: Which Flu Vaccine Should Children Get?](#)

Illinois Chapter

American Academy of Pediatrics
DEDICATED TO THE HEALTH OF ALL CHILDREN®



SOCIAL MEDIA IMAGES AND SAMPLE MESSAGES



Find social media images that you can share through your own platforms [HERE](#). Suggested wording to go with them:

- Seasonal flu is spreading early this year – vaccination is recommended for everyone 6 months and older.
- It's not too late to get a flu vaccine!
- With Flu, RSV, and COVID-19 circulating this season, it's important to get vaccinated when you can.
- With respiratory virus season starting early this year, it's important to get your flu vaccine as soon as possible.
- Pediatric flu deaths have been reported this season – vaccination can help prevent illness, hospitalization, and death.
- Cases of flu are rising earlier than usual, get your flu vaccine to help keep yourself and your loved ones healthy!
- There is no vaccine for RSV, but flu and COVID-19 vaccines can help keep you and your children healthy this winter.
- It is safe to receive your flu and COVID-19 vaccine at the same time!

